

Guide By Your Side™

What is it?

Guide By Your Side is for families of children who are **Deaf or Hard of Hearing**. The program gives families the opportunity to meet with a parent of a Deaf or Hard of Hearing child, a trained **Parent Guide**. The program is **FREE**.

What does it offer?

- An ongoing, supportive relationship with another parent of a child who is Deaf or Hard of Hearing.
- Information about language and communication options provided in an unbiased manner.
- Help in knowing which local, state, and national resources may be most helpful.
- Connection to adults who grew up Deaf or Hard of Hearing.
- Collaboration with Early On®, Intermediate School Districts, and other service providers.



Did you know?

Parents reporting social networks with other parents of children who are deaf were associated with less **isolation**, greater **acceptance** of their child, and improved interactional **responsivity**. (Hintermaier, M., 2000)

What parents say...

- ♦ *“Finally, someone understood what I was feeling because she’d felt this way too. After I met her, I just started reconnecting to the world again.”*
- ♦ *“This program is the best resource!”*
- ♦ *“Talking to another parent who’s ‘been there’ is very helpful.”*

Program Highlights

- Visiting about 75 families annually!
- Families of children of all ages served!
- Families may have multiple visits with their Parent Guide.
- Each family receives a **FREE** copy of the **Family Notebook**, especially written for Michigan families.



Who are Parent Guides?

Parent Guides are parents who understand the full range of reactions to learning your child is Deaf or Hard of Hearing. Guides listen, provide resource navigation, and model positive strategies. Guides are trained to empower families through decision-making, without swaying their decisions. Parent Guides live all over the state.



Make Connections in the Hands & Voices Community

Included in the first visit with a Parent Guide is a free year membership with Michigan Hands & Voices. Our organization provides a network of support, events to meet with other families, and learning opportunities through conferences and webinars. Connect with us on our website, www.mihandsandvoices.org, or on social media.

Michigan Hands & Voices™ Guide By Your Side™ Program

Meet our Parent Guides: Our Guides represent many different experiences and are trained to support families.



Dina is our Arabic speaking guide. She is a mom to three boys. Her youngest son is Hard of Hearing.



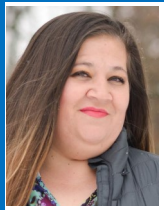
Tia is a mom to three children. Her oldest daughter was born with CMV and has progressive hearing loss.



Toni's experience with her deaf son has made her very enthusiastic about helping others.



Ann is a mom to three girls. One is deaf and another who has Down Syndrome.



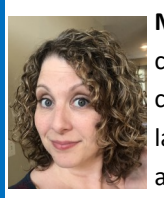
Elva is our Spanish speaking guide. She has two children with hearing loss and is also Hard of Hearing herself.



One of **Janel's** four children was born prematurely and is Hard of Hearing with Visual Impairment.



Delani is a mom of 5 with two daughters that are Deaf. Delani is a strong advocate for her children.



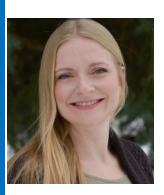
Michelle is a mother of 4 children and her second child is deaf. He has bilateral cochlear implants and the family also signs.



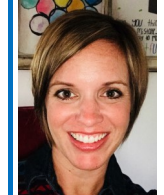
Carla is a parent through adoption to a son who is deaf with Waardenburg Syndrome.



Tori is a mom to two children. Her son was late diagnosed with profound hearing loss.



Jennifer's son uses a hearing aid and a cochlear implant. The family uses spoken and sign language.



Melissa's daughter has sensorineural hearing loss that was identified just before she entered kindergarten.



Amanda's oldest son was born deaf and has Waardenburg Syndrome. He has bilateral cochlear implants.



Karen has been a parent guide for seven years. Her son is Hard of Hearing.

Note: Guide By Your Side™ is a program of Michigan Hands & Voices™. Many factors are considered when placing Guides with families. The GBYS Coordinator will match families with their guide. New Guides may have been added after printing.



**Call/Text Guide By Your Side Coordinator
Amanda Schneider at 517-712-8061
or Email schneidera6@michigan.gov**



Updated 11.1.2019